



Network Management System (NMS)

Datasheet



Overview

PalC **Network Management System (NMS)** software is a powerful solution designed to efficiently monitor and manage network infrastructure. With its comprehensive set of features, it enables organizations to effectively control and optimize their network resources. By leveraging the FCAPS framework, our NMS software provides robust functionality in the areas of Fault, Configuration, Accounting, Performance, and Security management

Salient Features

► Infrastructure Management

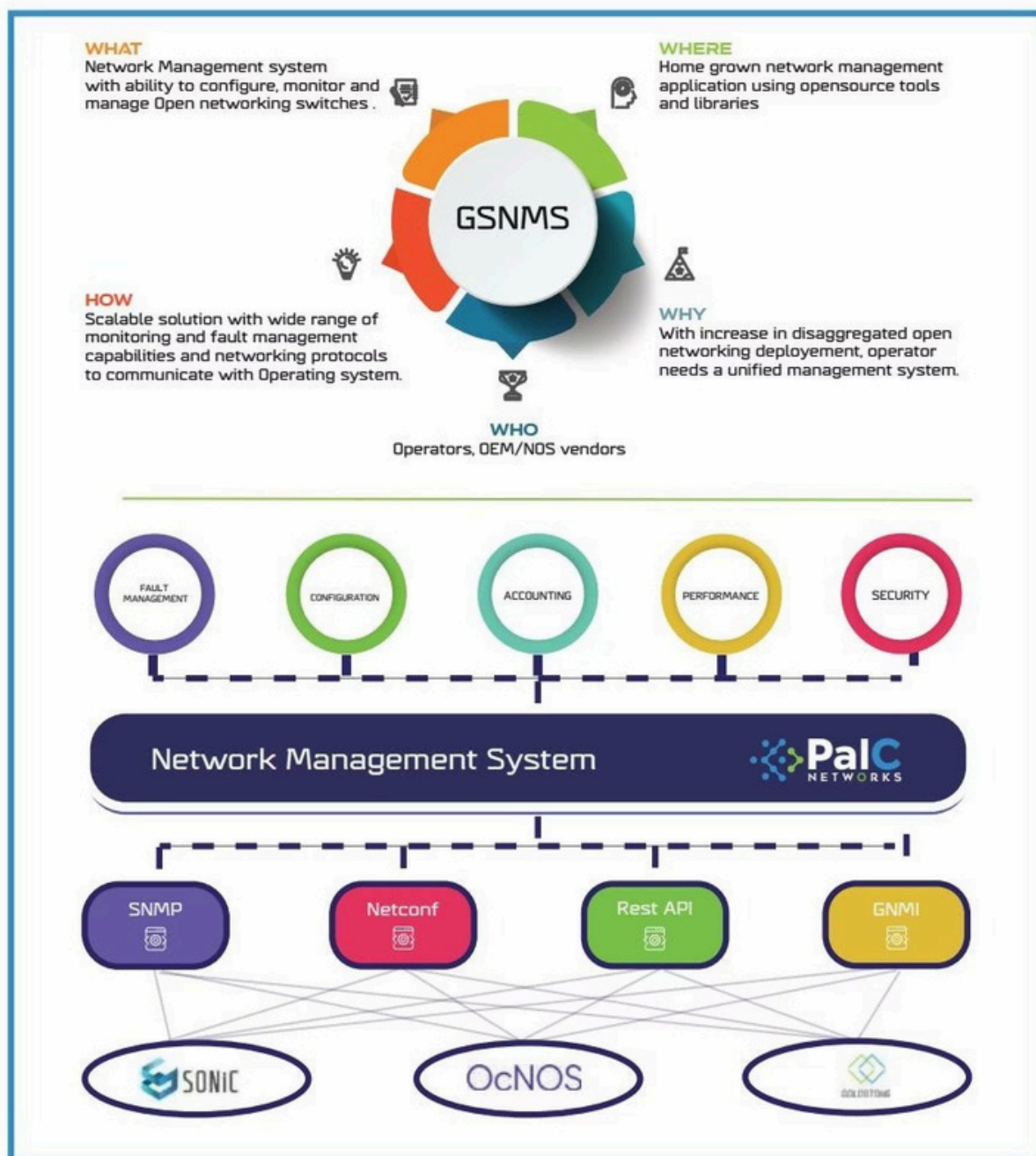
- L Cross connect for Edgcore Cassini boxes
- Interface (Ethernet/Optical) configuration Management
- Inventory Management, User management

► Monitoring & Visibility

- Peripheral devices Monitoring
- Optical Parameter Monitoring
- Topology viewer, alarms/event notification, user management

► Architecture

- Microservices compatible architecture
- Scalable Event-Driven Framework
- API-First Design



Roadmap Features

→ Layer-2 Configuration Features

Expanding configuration capabilities to support Layer- network management

→ Enhanced Network Automation Capabilities

Streamline dautomation features to reduce manual network operations and improve efficiency

→ Alarm Trigger Based on SNMP Trap/Netconf Notifications

Advanced alerting mechanisms triggered by SNMP Trap and Netconf notifications for proactive network management

→ Integration with Cloud-Based Environments

Seamless integration capabilities with cloud-based infrastructure and services

Supported Software

PalC NMS is compatible with leading network operating systems and platforms designed for various deployment

SONiC

For data center deployments, Providing comprehensive management of data center network infrastructure

Goldstone

For packet optical deployments, enabling unified management of packet and optical network layers

OcNOS

For DC/CSR requirements, supporting both data center and carrier-scale routing environments